

USING SIGNALINE LINEAR HEAT DETECTION IN COLD STORAGE AND LOW TEMPERATURE

Signaline Linear Heat Detection versatility means our cables can be installed in many applications where other forms of fire detection fail.

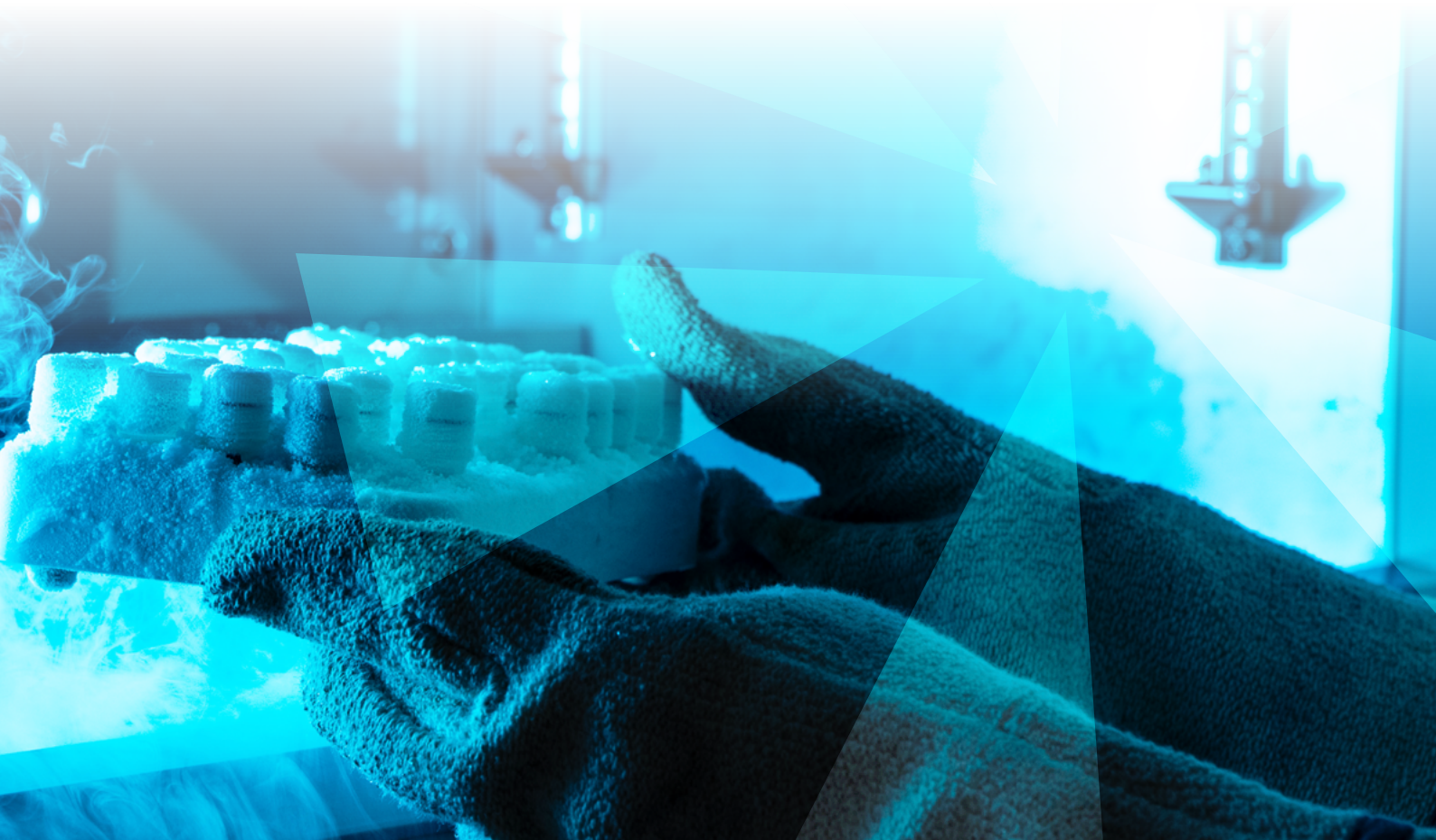
Cold storage facilities, commonly found in the pharmaceutical and food industries, ambient conditions can lead to faults on standard fire detection equipment.

Signaline Linear Heat Detection is approved for use down to -40°C . Ensuring your site is covered in even the most extreme of conditions.

When used with the Signaline LocatorPlus the alarm location is clearly identifiable and a Modbus/RS

output allows interface with wider building management systems.

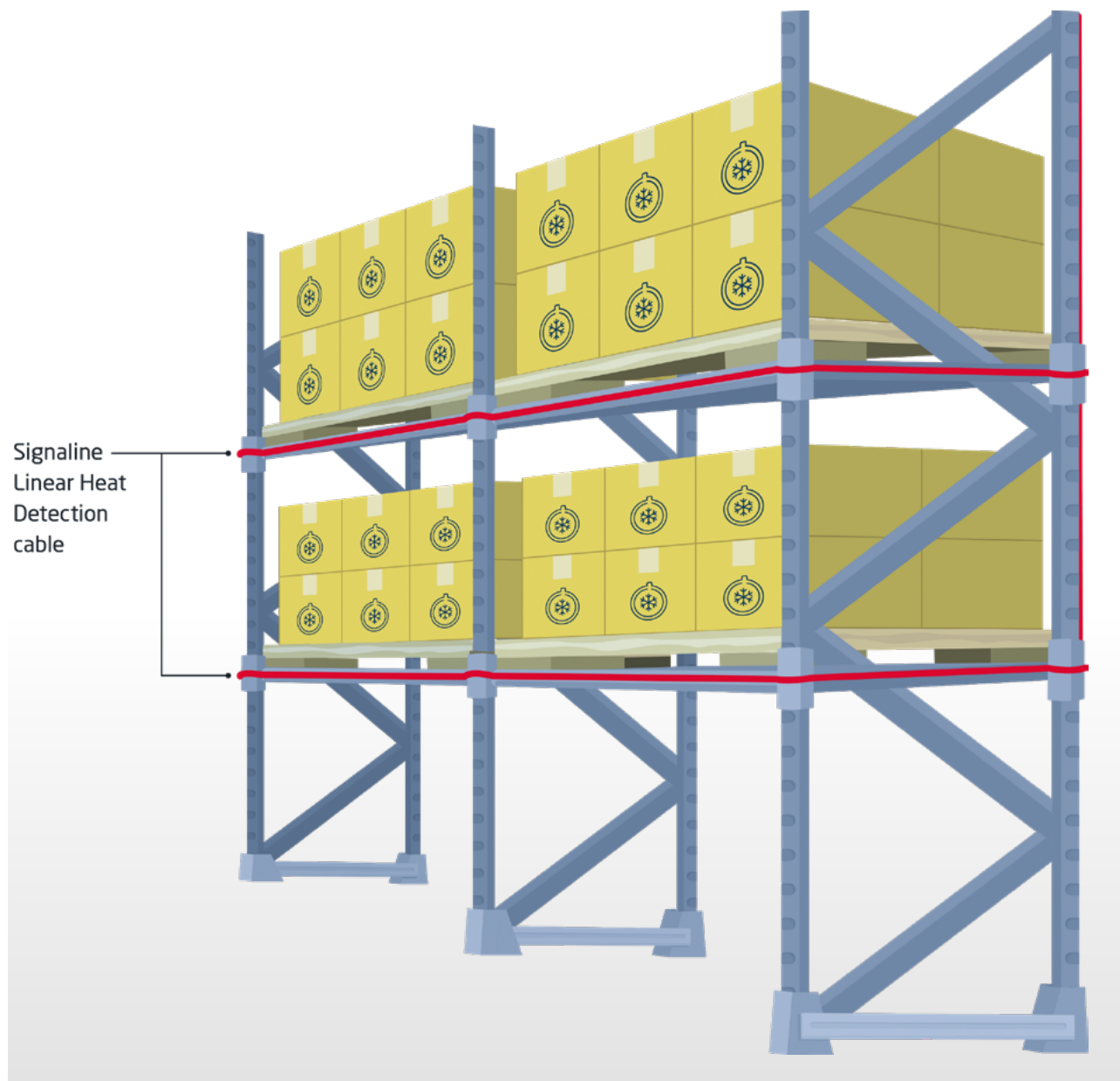
Signaline cables are also a zero maintenance technology meaning that you will not need to be powering down freezers and cold storage to allow access on site.



USING SIGNALINE LINEAR HEAT DETECTION IN COLD STORAGE AND LOW TEMPERATURE

Due to the extreme cold temperatures the atmosphere is very dry. This means risk of fire is increased. Signaline Linear Heat Detectors can quickly identify an over heat risk and raise the alarm.

Signaline Linear Heat Detectors can be installed across the roof space within the cold storage but also alongside the racking to allow for quick and efficient notification of an alarm event.



Visit us at: www.signaline.com
Call us on: **+44 (0) 1252 725257**
Email us at: sales@lgmproducts.com

For all your technical support our office based technical experts are just a phone call away.