



Signaline HD+ End of Line

Programmable Temperature Linear Heat Detector End of Line



Resettable Line Type Heat Detector
 EN54 Part 22 Approved
 UL Approved
 End of Line termination box

Fire
detection

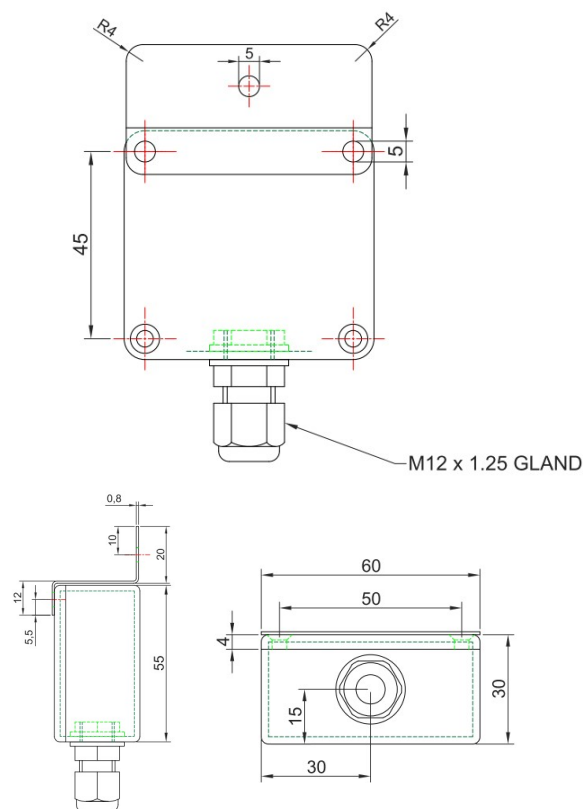


Signaline





Model	Signaline HD+ End of Line
Alarm class	EN54-22:2015+A1:2020 (Class A1I, A2I and BI) UL521 "Heat Detectors for Fire Protective Signalling Systems"
Operating temperature	-40°C to +125°C
Mounting	Via external fixing bracket (included)
Enclosure Material	Aluminium
IP and impact rating	IP65
Weight	115g



Signaline HD+ End of line is to be used with Signaline HD+, Signaline HD+ R or Signaline HD+ S, and Signaline HD+ Controller

Signaline HD+ is an advanced Programmable Temperature Linear Heat Detector. When used with the Signaline HD+ Controller and EOL, the user can select various alarm response temperatures or class as well as pre-alarm settings.

The controller is easily adjusted for the length of cable being used.

Signaline HD+ Programmable Temperature Linear Heat Detectors are resettable after a over-heat event.

For our full range of linear heat detectors please visit www.Signaline.com



Signaline is proudly manufactured in the UK