



Retractable Cable

For Signaline Roof Tank Installations



4-core cable

Designed to withstand harsh winds

Oil, grease and chemical resistant

Custom made to accommodate tank size

Fire
detection



Signaline





Model	Signaline RC Retractable Cable
Cable voltage	12-24Vdc
No. of cores	4
Conductor size	0.75mm
Dimensions	Extended length (A): 20 (or custom length) Axial short end tail (B & C): 1.5m (or custom) Coil Diameter (D): 200mm Cable Diameter (E): 10mm
Operating temp.	-40°C to +85°C
Outer sheath	Hytrell
Colour	Black

Signaline RC Retractable Cables are manufactured specifically for floating roof petro-chemical storage tanks.

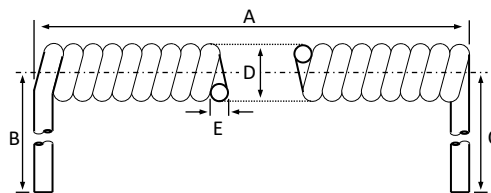
A floating roof rises and falls as the tank fills and empties. When the circumference of this roof is fitted with Signaline Linear Heat Detection, Retractable Cable allows for the system to remain connected as the roof moves.

A Signaline Universal Connector Box is fitted at the top of the tank. This is connected to the detector on the roof using Retractable Cable. As the roof drops lower, the spring-like cable extends and as the roof rises, the cable retracts into a closed spring coil.

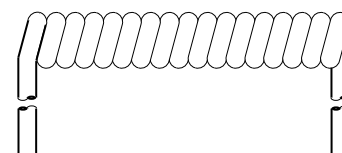
Signaline RC Retractable Cable is designed to withstand harsh environments, oil, grease and similar chemicals. It is not prone to flap in strong winds. The above specification will meet the requirements of most floating roof applications.

For specialist applications please provide our sales office with your requirements.

Dimensions



Tangential Tails



Axial Tails



Visit Signaline.com for our full range of heat detection solutions